



PROPERTY
SERVICES
LIMITED



2 Stanway Road Earlsdon, Coventry, CV5 6PJ

£995 Per Calendar Month



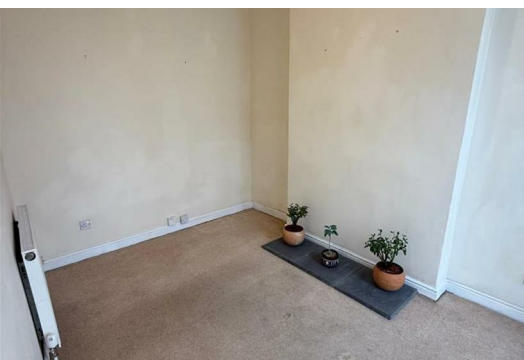
2 Bedroom End-Terrace in Popular Earlsdon Area – Available Immediately!

Location: Earlsdon, Coventry
Rent: £995 PCM (Excluding Bills)
Council Tax Band: B
Unfurnished

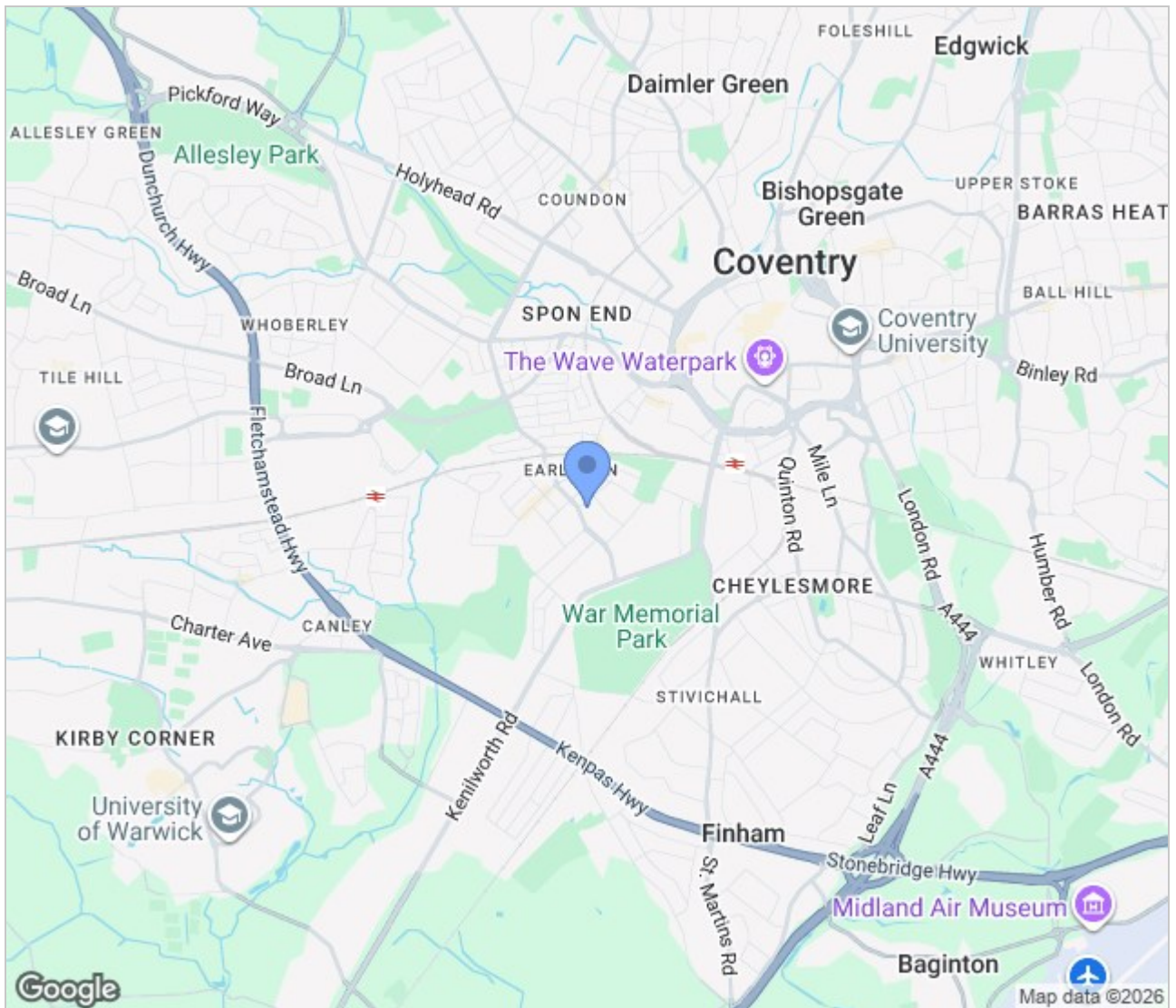
An excellent opportunity to rent a spacious 2-bedroom end-terrace property located in the highly sought-after Earlsdon area of Coventry. Ideal for families or professional couples, this home offers comfortable living in a vibrant and well-connected neighbourhood.

Property Features:

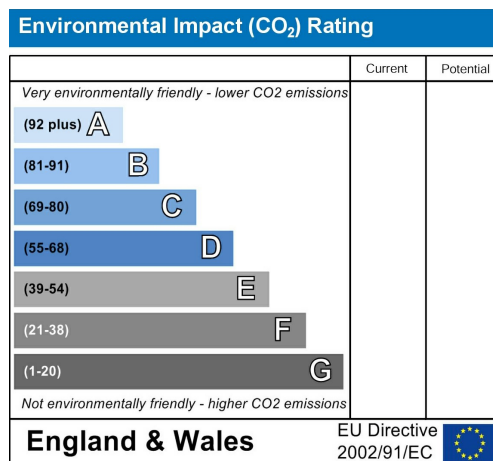
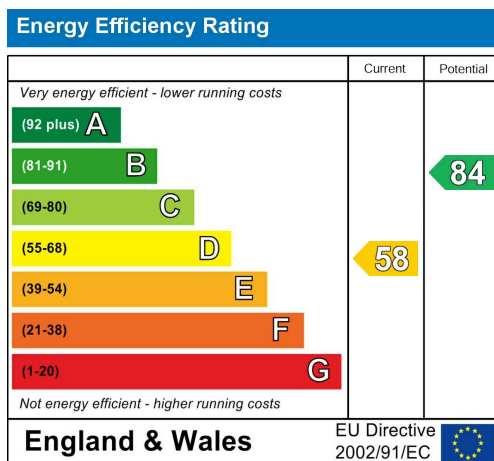
- *Modern kitchen with oven and hob
- *Bright and airy reception/living room
- *Two generous double bedrooms
- *Convenient first floor WC
- *Family bathroom located on the ground floor



Area Map



Energy Efficiency Graph



These particulars, whilst believed to be accurate are set out as a general outline only for guidance and do not constitute any part of an offer or contract. Intending purchasers should not rely on them as statements of representation of fact, but must satisfy themselves by inspection or otherwise as to their accuracy. No person in this firm's employment has the authority to make or give any representation or warranty in respect of the property.

GLB Property Services Ltd
9 Hay Lane
Coventry, CV1 5RJ

T. 02476 433416

info@glbpropertyservices.com
www.glbpropertyservices.com

